



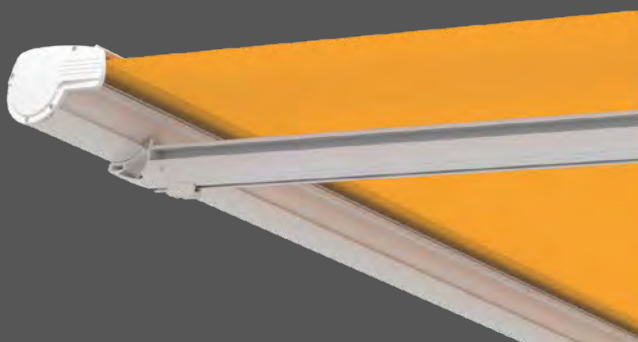
Rail system  
Pergola



Capri  
Pergola

Just  
*enjoy life!*

**Lewens**  
MARKISEN





*Capri Pergola type:  
sturdy and decorative  
as a patio sunshade*

## Capri Pergola type

Patio awning with flexible guide positioning



### Pergola type

*The Capri is a particularly sturdy form of pergola awning for the patio. The tracks and uprights can be positioned variably as required.*



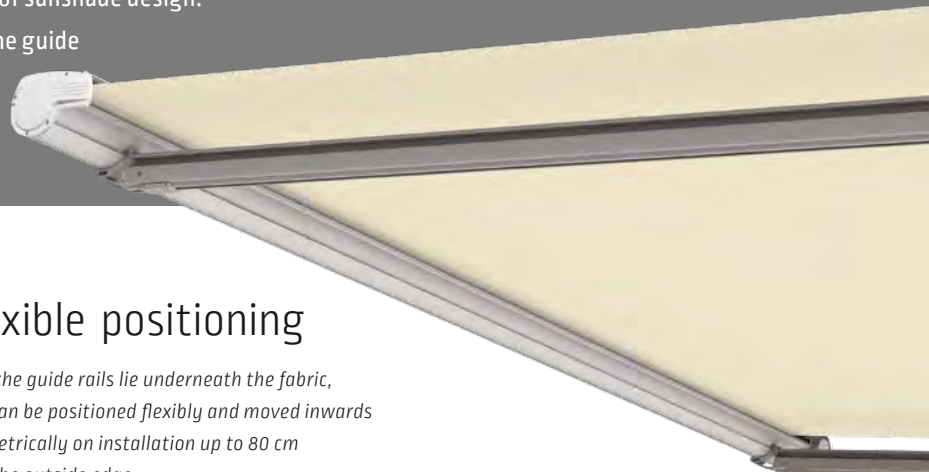
## Equipment and extras

- Width, 1 unit max. 600 cm, drop max. 600 cm
- Electric motor
- Options:
  - Radio motor/ radio remote control,
  - automatic weather sensor,
  - radiant heater



Installed in front of a house or terrace wall, the Capri type pergola combines the lightness of a fabric sunshade with the appearance of a patio roof. The free-standing uprights render the pergola awning an extremely windproof sunshade design.

A particular highlight is the option of mounting the guide tracks and uprights moved inwards to suit the conditions of the structure and site.



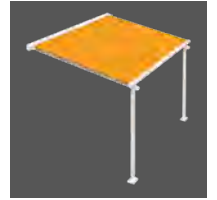
## Flexible positioning

*Since the guide rails lie underneath the fabric, they can be positioned flexibly and moved inwards symmetrically on installation up to 80 cm from the outside edge.*



# Capri

Equipment and technical features



Manufactured and assembled  
in Germany



EN 13561

Quality and technology  
CE-compliant

Type	Pergola
Fabric guide	Open
System height	223 mm
Upright height <i>(for adjustment on site)</i>	250 cm <input checked="" type="checkbox"/>
Special upright heights	<input type="checkbox"/>
<b>Unit widths <i>(max.)</i></b>	
1 unit <i>(single field)</i>	600 cm
<b>Drop <i>(max.)</i></b>	
Depth <i>(incl. cassette, on Capri plus 11 cm return roller)</i>	600 cm
Upright distance from wall <i>(max.)</i>	500 cm
Upright recess at front <i>(max., depends on unit depth)</i>	100 cm
<b>Lateral recess</b>	
Recess <i>(guide tracks with uprights)</i>	up to W 550 cm: <input checked="" type="checkbox"/> 25 cm from W 551 cm: <input checked="" type="checkbox"/> 40 cm
<i>(other) inward positioning on request <i>(indicate when ordering)</i></i>	<input type="checkbox"/> max. 80 cm
<b>Drive</b>	
Electric motor <i>(for wall switch)</i>	<input checked="" type="checkbox"/>
Radio motor <i>(io)</i>	<input type="checkbox"/>
<b>Frame colours</b>	
17 RAL colours + 6 textured finishes <i>(Lewens standard colours)</i>	<input checked="" type="checkbox"/>
Additional RAL, special colours and effect finishes	<input type="checkbox"/>
<b>Awning fabrics <i>from the LEWENS collection</i></b>	
Branded acrylic <i>(spun-dyed, ultra fade resistant)</i>	<input checked="" type="checkbox"/>
Branded polyester <i>(spun-dyed, ultra fade resistant)</i>	<input type="checkbox"/>
Tenara quality sewing yarn	<input checked="" type="checkbox"/>
<b>Options</b>	
1   Radio motor + radio remote control <i>(io)</i>	<input type="checkbox"/>
2   Automatic weather sensor <i>(sund,wind, rain)</i>	<input type="checkbox"/>
3   Radiant heater <i>(only wall attachment)</i>	<input type="checkbox"/>
4   Additional fabric support	<input type="checkbox"/>
<b>Attachment</b>	
Wall attachment + 2 front uprights <i>(wall brackets, base consoles included)</i>	<input checked="" type="checkbox"/>
additional/further attachment materials	<input type="checkbox"/>
<b>Note</b>	

*Due to the design and the weight of the awning fabric, the fabric may sag in the middle on large awning sizes. However, this has no effect on the operation and / or service life of the awning.*

Standard  Option

*Possible dimensions and restrictions along with the complete range of electronic accessories can be found in the technical data in the current Lewens price list.*

Your stockist will be happy to advise you:

**Lewens**  
MARKISEN



[www.lewens-markisen.de](http://www.lewens-markisen.de)

*Subject to technical alterations. Date: 04/2022*